

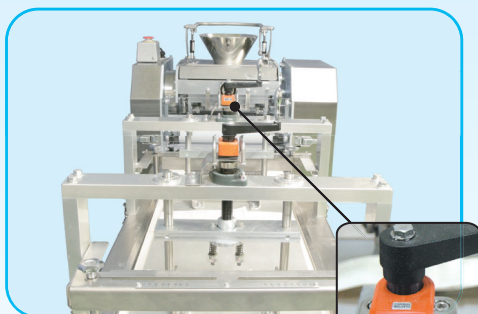
# "WIDE FINE" Moulder

## Model WFT

***Easier operation, cleaning & maintenance!!!***

- Variable speed change by inverter for belt speed (geared with roller).
- Design for higher sanitation and easier maintenance enable easy replacement of the belt.
- Sanitary stainless cover

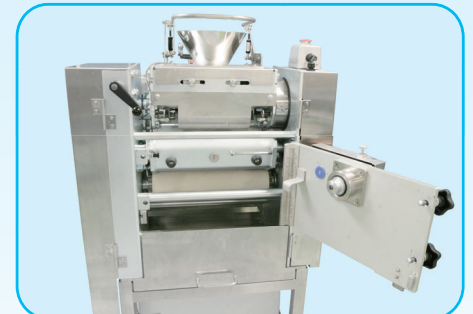
There is an emergency stop bar at Infeed hopper.  
Machine stops when bar is pressed.



"Return Gap" mechanism for pressure board.  
Pressure board height is indicated with figure for easier setting.



Upper roller section is able to tilt for easy cleaning, maintenance and sanitary. Only lower roller can be used with removal hopper (optional)

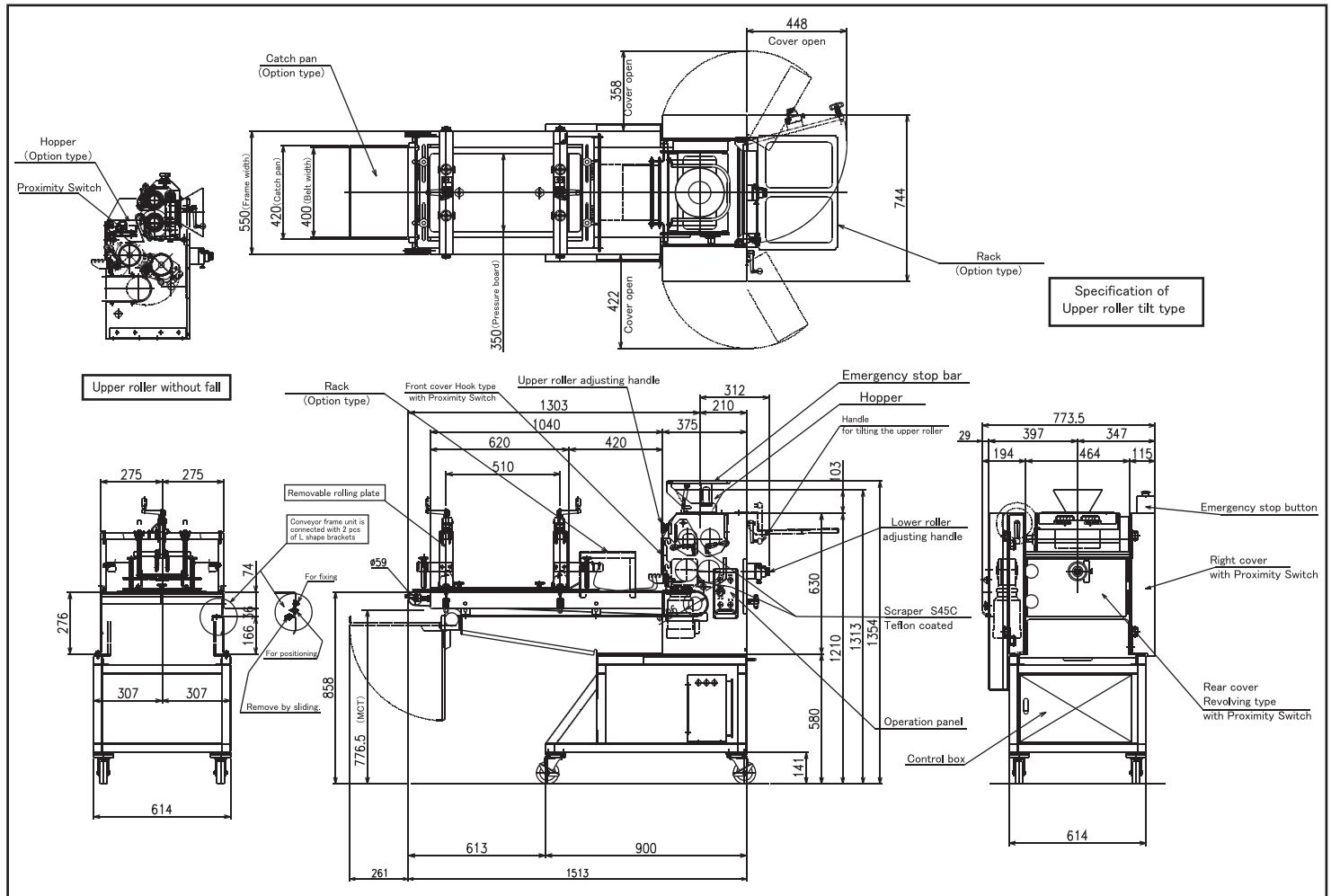


Rear cover is fully opened for easier maintenance.  
Equipped with a pulling-put type catch pan underneath.

**OSHIKIRI**

# "WIDE FINE" Moulder

# Model WFT



## ■ Specifications

Capacity	3,000pcs/h in case of 230g 4,500pcs/h in case of 30g
Dough weight	30~230g
Roller diameter	Upper $\phi 85$ (Polyacetal) Bottom $\phi 100$ (Teflon)
Roller clearance	Upper 9 - 14mm Lower 1 - 9mm
Roller speed	27.5~55m/min
Pressure board size	W 350 X L 680mm
Pressure board height adjustment range	10~50mm
Width plate adjusting range	100~330mm
Motor	For Main drive motor (Standard) 4P 0.4kW
Machine weight	Approx. 350kg

## ■ Optional items

- SUS made base frame / control box
- Pressure board also available for roll product
- Detachable bottom plate of pressure board
- Container rack at infeed
- Discharge receiving pan
- Discharge chute
- Digital indication of roller clearance



Note) Specifications and dimensions may be subject to change without prior notice.

Note) Supply voltage is in accordance with the one in the country machine is used.  
Transformer might be needed according to the specifications.

## OSHIKIRI MACHINERY LTD.

<https://www.oshikiri.com/>

4, Kirihara-cho, Fujisawa-shi, Kanagawa, 252-0811 Japan  
Phone: 0466-44-6184 Fax: 0466-44-6187 E-mail: intl@oshikiri.com

Oshikiri Corporation of America  
10425 Drummond Road, Philadelphia, Pennsylvania 19154-3898  
Phone: 215-637-6005 Fax: 215-637-6041 E-mail: oshikiri-production@msn.com

23.04.06 OSHIKIRI P-169-6



OSHIKIRI Website