

SM600 HORIZONTAL MIXER

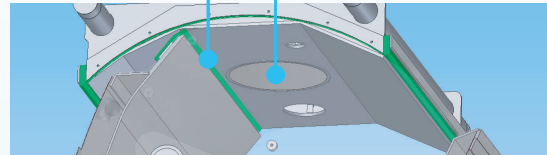
SANITARY VERSION

IMPROVEMENT FOR CLEANING ON THE FLOUR GATE

- Roof without dent holes (PAT. US 8,070,353B2)
Shorten cleaning time by flushing the face of gate with the face of canopy.
- Slide scraper can be installed (PAT. US 8,382,365B2)
Scrape dough residue on the canopy automatically when tilting the bowl.
Effect on prevention of dough residue on the back side of bowl
Easy cleaning of scraper
- Easy removal for water inlet and air breather
Sanitation to be washed easily.

SLIDING SCRAPER UNIT

FLUSH GATE



INCREASE AN EFFICIENCY OF BOWL COOLING

- Cooling on main shaft with forced circulation of four faces of bowl
Prevention of dough stick to the side plate in the bowl
- Cooling on tip of bowl
Easy discharge of dough

QUIET SOUND

- Driven shaft by timing belt
No metal sounds and quiet by resin belt
No lubrication, no oily

IMPROVEMENT OF SEAL EFFICIENCY ON

- Seal tight of bowl insulation cover
Prevention to enter the flour.
- Eccentric seal on upper face of bowl
No flour leaking at mixing

IMPROVEMENT OF AGITATOR CLEANING

- Large clearance on bowl wall
Easy cleaning on the back side of spider.
- Flat shaped spiders
Take out the dough easily as there is a few unevenness

WATER INLET
Easy removal

AIR BREATHER
Easy removal

Seal tight of bowl cover

OPERATION PANEL

FLAT SPIDER

AIR BREATHER
Easy removal

Stainless steel frame

Cooling on bowl ends

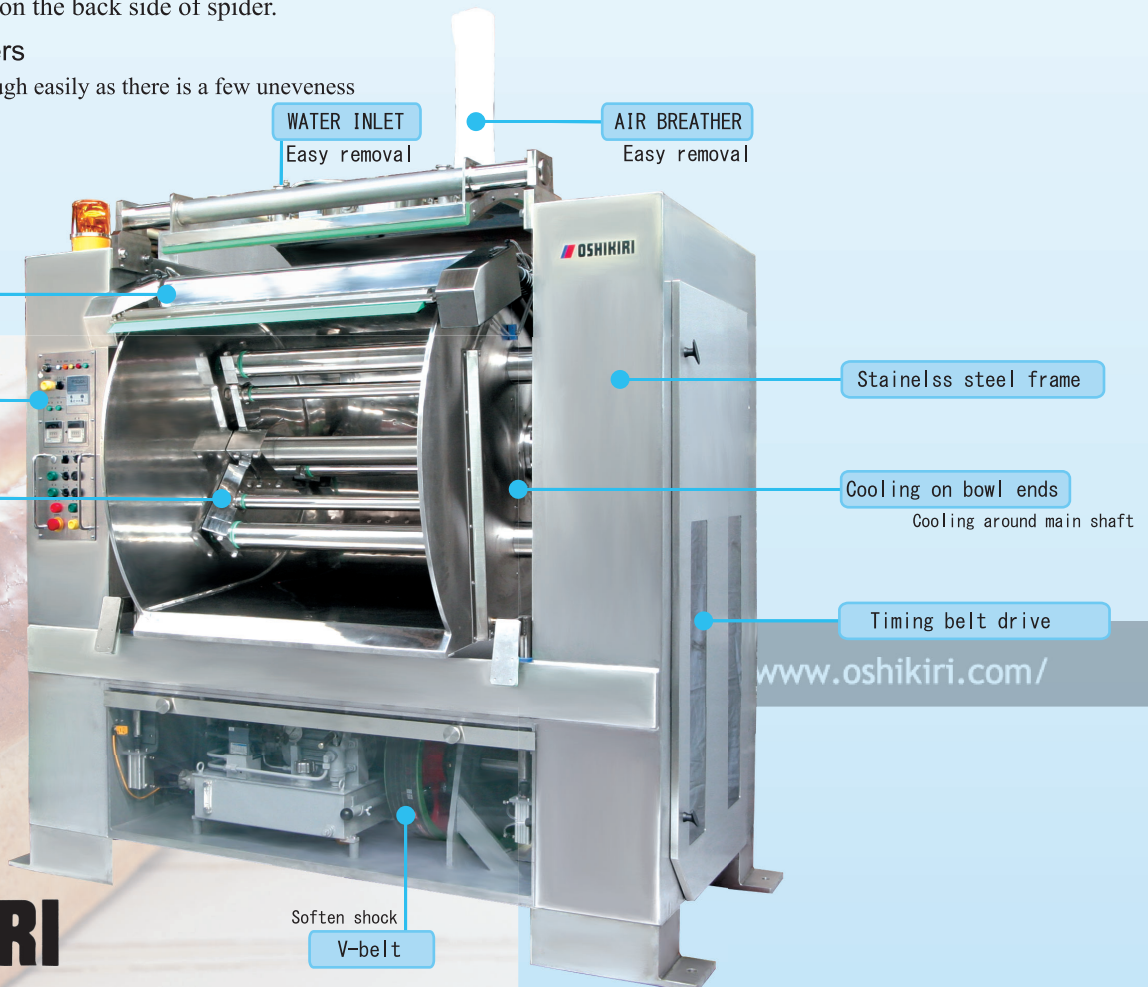
Cooling around main shaft

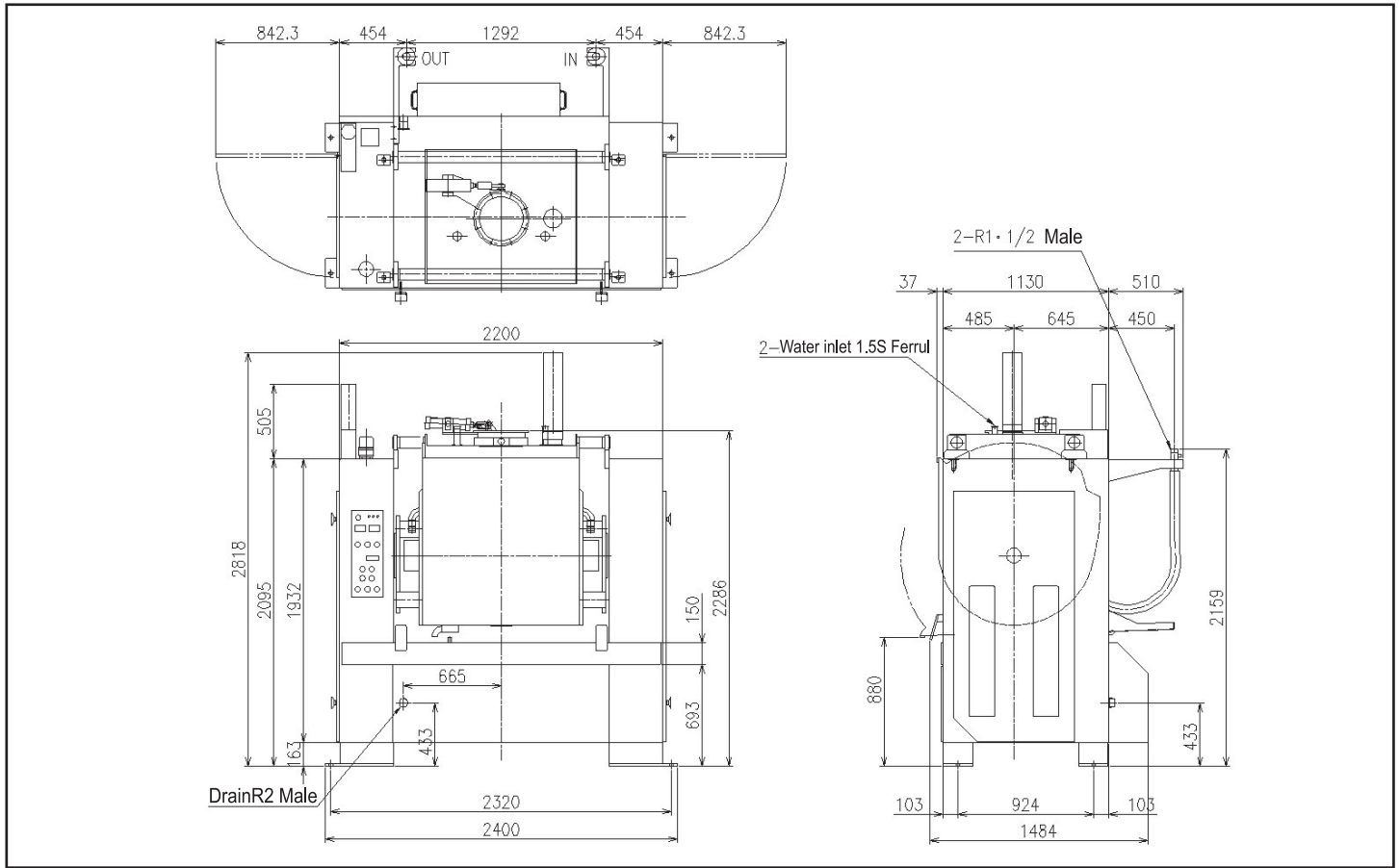
Timing belt drive

www.oshikiri.com/

Soften shock
V-belt

OSHIKIRI





SPECIFICATIONS

Max.Dough Weight [kg]	270 (Soft Dough)
Agitator [R.P.M.]	76/38
Agitator Shape	YY-2
Jacket Cooling	Water Cooling
Main Power Line [kW]	22/11
Motor for hydraulic unit [kW]	1.5
Bowl Tilting	Hydarulic Cylinder
Open/Close Flour Gate	Rotary Pneumatic method
Cooling Inlet Bore	R11/2 (Male)
Ingredient Bore	1.5S Ferrul
Machine Weight [kg]	5000
Cooling load [kW]	17.4

Note) Specifications and dimensions may be subject to change without prior notice.
 Note) Supply voltage is in accordance with the one in the country machine is used.
 Transformer might be needed according to the specifications.

■STANDARD SPECIFICATIONS

1. Flat roof, flat damper gate
2. Timing belt drive
3. Air breather, one-touch removal water inlet
4. Auto.bowl drain
5. With agitator clearance adjustment
6. Cooling hoses in left and right on back sides
7. Drain hose ferrul removal
8. Transparent of door and covers

■OPTIONAL ITEMS

1. Bowl rear scraper
2. Drive motor power up
3. Touch panel operation panel
4. PATLITE · SIGNAL TOWER
5. Automatic box stopper
6. Development Monitor MULTI

OSHIKIRI MACHINERY LTD.

<https://www.oshikiri.com/>

4, Kirihara-cho, Fujisawa-shi, Kanagawa, 252-0811 Japan
 Phone: 0466-44-6184 Fax: 0466-44-6187 E-mail: intl@oshikiri.com

Oshikiri Corporation of America

10425 Drummond Road, Philadelphia, Pennsylvania 19154-3898
 Phone: 215-637-6005 Fax: 215-637-6041 E-mail: oshikiri-production@msn.com



OSHIKIRI Website