

SD-20/38

AUTOMATIC STANDING DIVIDER & ROUNDER



Retail bakeries require this simple and easy Divider and Rounder. Put the dough on work pallet to make 30 dough pieces Simple and easy operation for anybody.

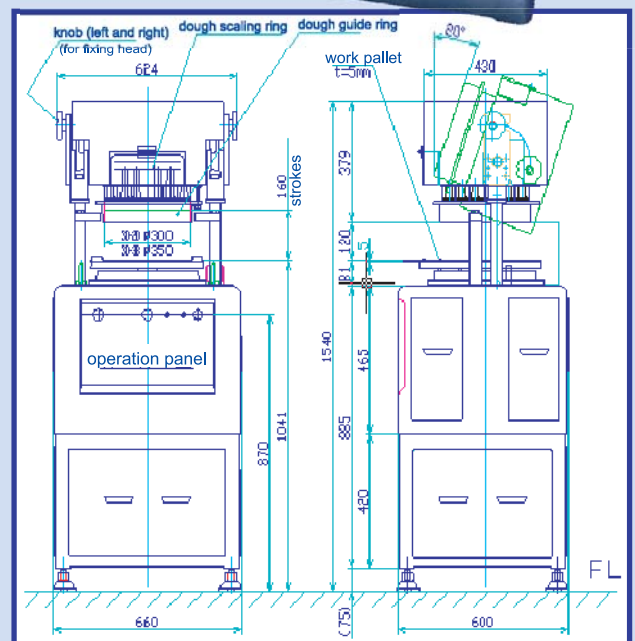
*quick
no damage to the dough
no dough loss*



<Specifications>

Dividing/Rounding	SD-20 : 20~40g SD-38 : 38~65g
When dividing only	SD-20 : 20~60g SD-38 : 38~80g
Numbers divided	30 balls/plate
Dividing time	7sec. (Head up/down)
Rounding time	0 - 30sec. (Adjustable)
Capacity	Approx. 3000 - 4000 dough pcs/h (Continuous)
Power Source	AC200V 3Phases
Motor	0.75kW - 4P with brake & 0.2kW - 4P
Head up/down	Stroke 160mm
Dough guide ring (mm)	SD-20 : 300 inside dia. SD-38 : 350 inside dia.
Machine dimention	W660 x D600 x H1540 mm (When Head lifted up) Dough Plate : H1040 mm
Machine weight	SD-20 : Approx. 460kg SD-38 : Approx. 480kg

Dough scaling range and rounding may change depending on specific gravity, recipe and proofing condition of dough.



AUTOMATIC STANDING DIVIDER & ROUNDER **SDS**



Round 30 dough pieces fine

Dough scaling range
40~110g



Easy clean as tilting the head.
Easy operation for anybody.

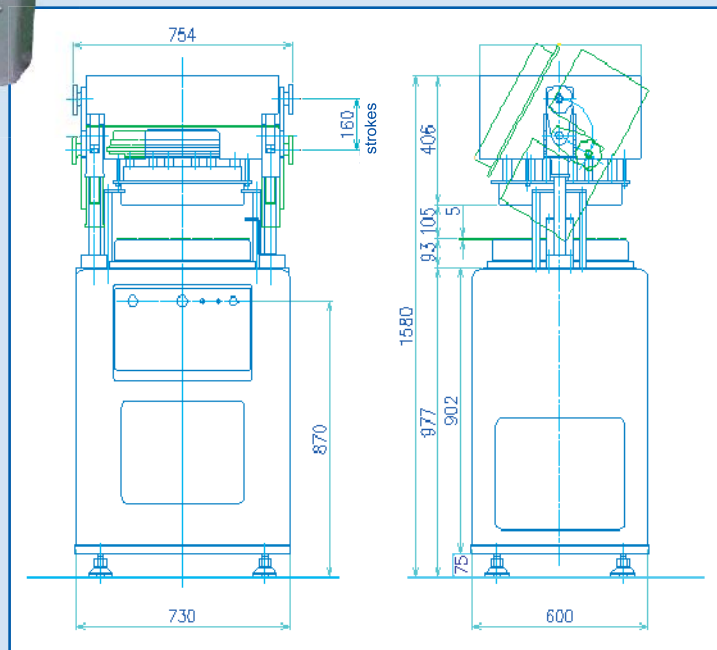


- 3 steps to make dough pieces**
- ① Set the work pallet with dough to main body
 - ② Start with both hands operation for safety
 - ③ Round the dough automatically ... finish working !

< Specifications >

Dividing/Rounding	40~90g
When dividing only	40~110g
Numbers divided	30 balls/plate
Dividing time	7sec. (Head up/down)
Rounding time	0 - 30sec. (Adjustable)
Power Source	AC200V 3Phases
Motor	0.75kW - 4P with brake & 0.4kW - 4P 40W for eccentric 4P(with brake)
Head up/down	Stroke 160mm
Dough guide ring (mm)	φ 400 inside dia.
Machine dimension	L730 D600 H1580 mm (When Head lifted up) Dough Plate : H1070 mm
Machine weight	Approx. 750kg

Dough scaling range and rounding may change depending on specific gravity, recipe and proofing condition of dough.



OSHIKIRI MACHINERY LTD.

<http://www.oshikiri.com/>

4, Kiri-hara-cho, Fujisawa-shi, Kanagawa, 252-0811 Japan
Phone: 0466-44-6184 Fax: 0466-44-6187 E-mail: intl@oshikiri.com

Oshikiri Corporation of America

10425 Drummond Road, Philadelphia, Pennsylvania 19154-3898

Phone: 215-637-6005 Fax: 215-637-6041 E-mail: oshikiri-production@msn.com