

Model **SBT**
Servo Bagger

*Packaging machine for both of type
one loaf and half loaf*

Gentle to bread



1. Servo motor design

*Pushes product gently eliminating
damage to bread*

2. Timing belt design

Allows for quieter machine operation



The wicket hole doesn't break!

3. Bag height sensor

Stabilizes bag opening, increasing accuracy

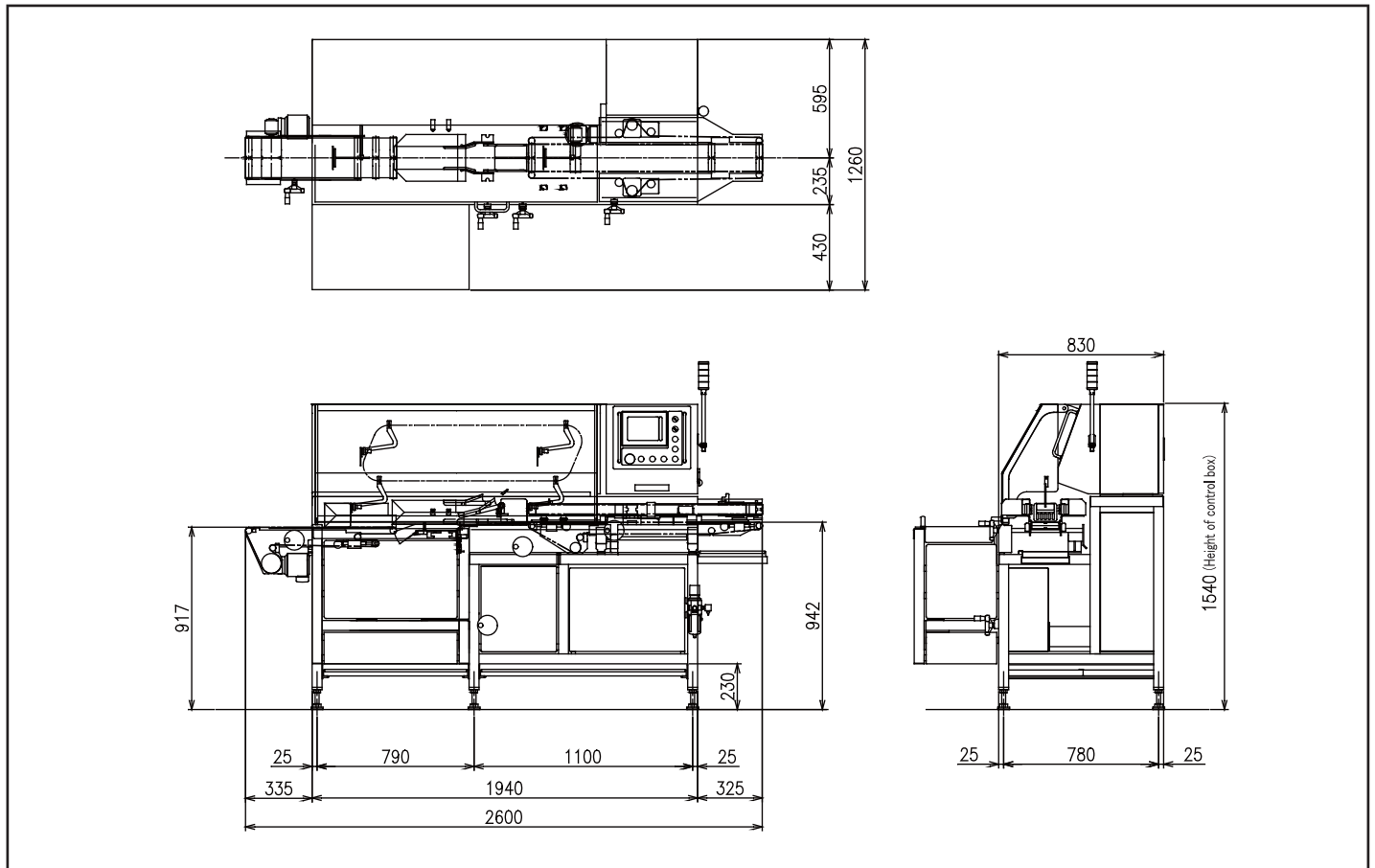
4. Automatic horizontal bag changer

Maintains proper bag nesting

OSHIKIRI

Servo Bagger

Model SBT



Servo Bagger <SBT>		
Capacity	Loaf 60pcs/min Max	Half loaf 70pcs/min Max
Power Source	AC200V 3phases 1.2kW	
Loaf size	Length : 130mm ~ 170mm Width : 110mm ~ 120mm Height : 90mm ~ 130mm	
Air Consumption	700NL/min	
Machine Weight	Approx. 1300kg	
Machine size	Approx. 2600mm × 1540mm × 1260mm	

Note) Specifications and dimensions may be subject to change without prior notice.
 Note) Supply voltage is in accordance with the one in the country machine is used.
 Transformer might be needed according to the specifications.

OSHIKIRI MACHINERY LTD. <https://www.oshikiri.com/>

4, Kirihara-cho, Fujisawa-shi, Kanagawa, 252-0811 Japan
 Phone: 0466-44-6184 Fax: 0466-44-6187 E-mail: intl@oshikiri.com

Oshikiri Corporation of America
 10425 Drummond Road, Philadelphia, Pennsylvania 19154-3898
 Phone: 215-637-6005 Fax: 215-637-6041 E-mail: oshikiri-production@msn.com