

Model PQB

Belt Driven Proofer[®]

EASY CLEANING
OUTSTANDING MAINTENANCE
OUTSTANDING SANITATION



POINT 1
BELT DRIVEN

- ◆ OILLESS
- ◆ LESS NOISE
- ◆ SAVING ENERGY

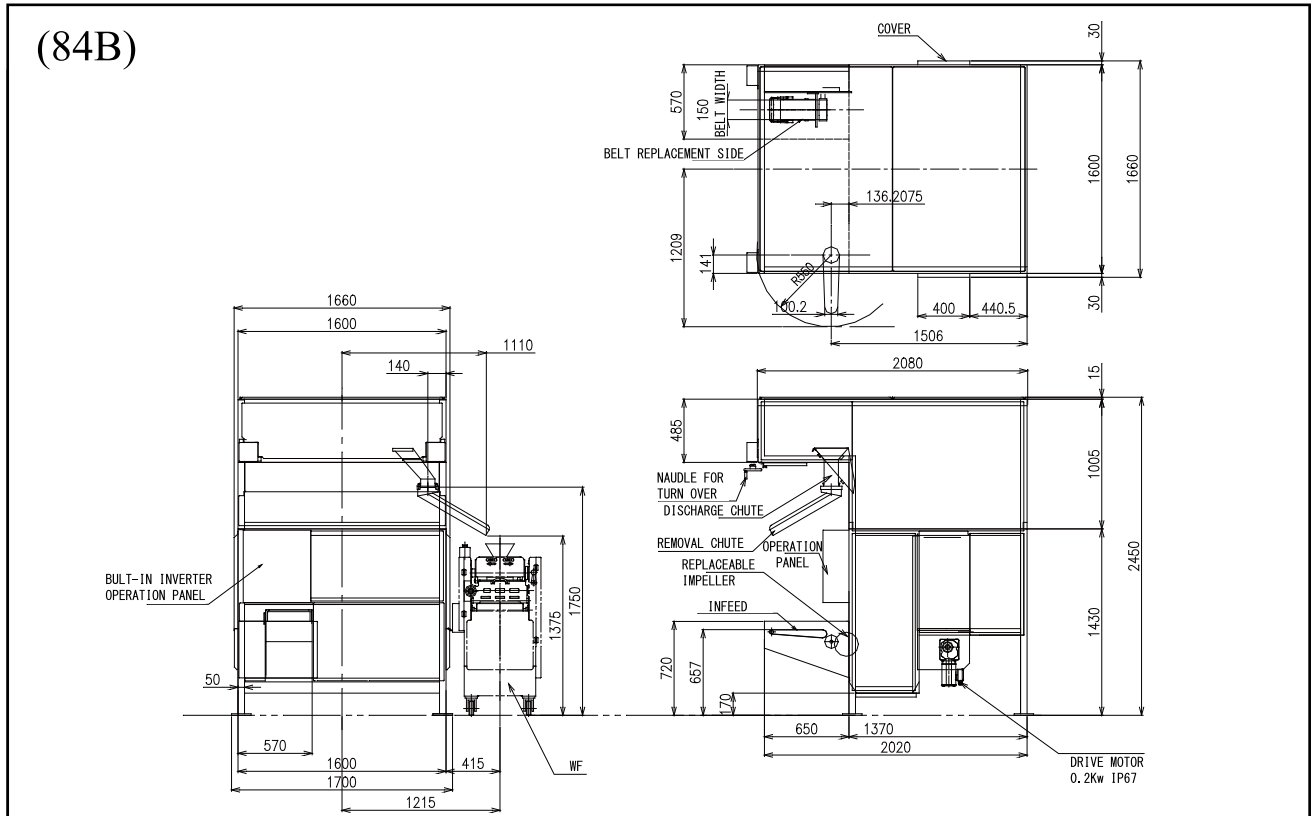


POINT 2
ONE-TOUCH REMOVAL

- ◆ ONE-TOUCH REMOVAL TRAY
- ◆ EASY CLEANING
- ◆ IMPROVEMENT OF MAINTENANCE

OSHIKIRI

Dimensional Drawing



Specifications

Belt driving proofer < PQB >		
Capacity(15min.proofing)	2500pcs/hr (84B)	3000pcs/hr (100B)
Proofing time	13 - 20min	
Dough weight	30 - 250g(soft) 30 - 300g(hard)	
Machine dimation	width 1700mm	
	Length 2080mm (84B)	3280mm(100B)
	height 2450mm	
Machine weight	Approx 1500kg	
Motors	0.2kW 4P 200V	

Note) Specifications and dimensions are subject to change without prior notice.
 Note) Transformer might be needed depending upon the specifications.

OSHIKIRI MACHINERY LTD. <https://www.oshikiri.com/>

4, Kirihara-cho, Fujisawa-shi, Kanagawa, 252-0811 Japan
 Phone: 0466-44-6184 Fax: 0466-44-6187 E-mail: intl@oshikiri.com

Oshikiri Corporation of America
 10425 Drummond Road, Philadelphia, Pennsylvania 19154-3898
 Phone: 215-637-6005 Fax: 215-637-6041 E-mail: oshikiri-production@msn.com



OSHIKIRI Website