

Model MG1

# Wide Moulder

One-line moulder, featuring large roller to mould a wide range of dough. Separate driver for roller and moulding belt allows the greater precision for each type of dough, especially bread doughs.

Adjusts roller clearance by 0.1mm.

Infeed conveyor can be attached for large dough



Separate driver for roller and moulding belt

Options for Pressure Board

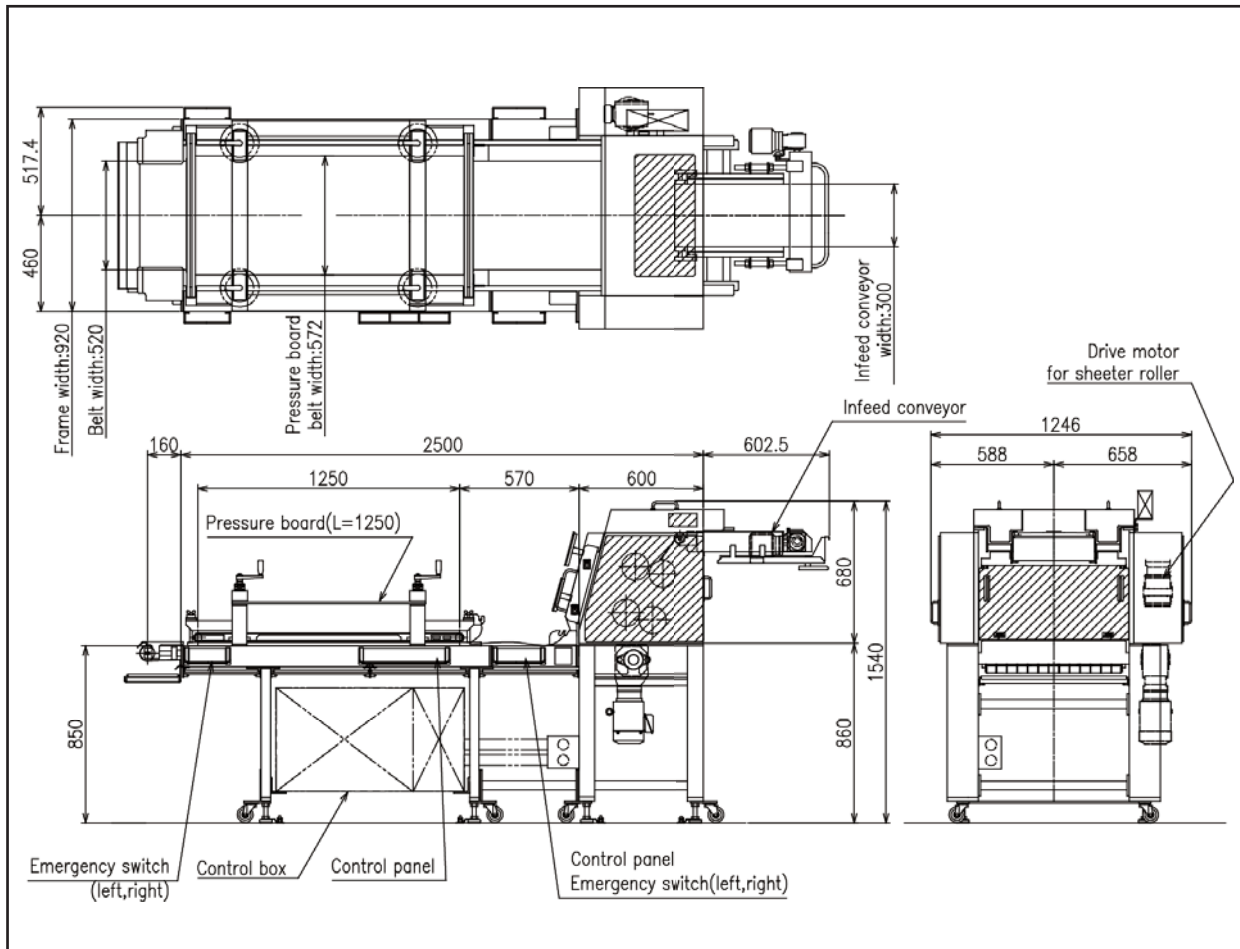
- Drive System
- Cantilever type for sanitation and hygiene



 **OSHIKIRI**

# Wide Moulder

# Model MG1



## ■ Specifications

Rollers	Upper roller	$\phi$ 130mm	Steel (plating) adjusting range 6 - 30mm
	Lower roller	$\phi$ 130mm	Teflon adjusting range 2 - 30mm
Motors	Roller Drive	0.75kW	30 - 60m/min
	Belt Drive	0.75kW	35 - 70m/min
	Infeed conveyor	0.10kW	10 - 20m/min
Capacity	1000 pcs/h		
Dough weight	60 - 800g		
Machine weight	Approx. 1,000kg		

Note) Specifications and dimensions may be subject to change without prior notice.

Note) Supply voltage is in accordance with the one in the country machine is used.

Transformer might be needed according to the specifications.

## OSHIKIRI MACHINERY LTD.

<https://www.oshikiri.com/>

4, Kiri-hara-cho, Fujisawa-shi, Kanagawa, 252-0811 Japan

Phone: 0466-44-6184 Fax: 0466-44-6187 E-mail: intl@oshikiri.com

Oshikiri Corporation of America

10425 Drummond Road, Philadelphia, Pennsylvania 19154-3898

Phone: 215-637-6005 Fax: 215-637-6041 E-mail: oshikiri-production@msn.com