

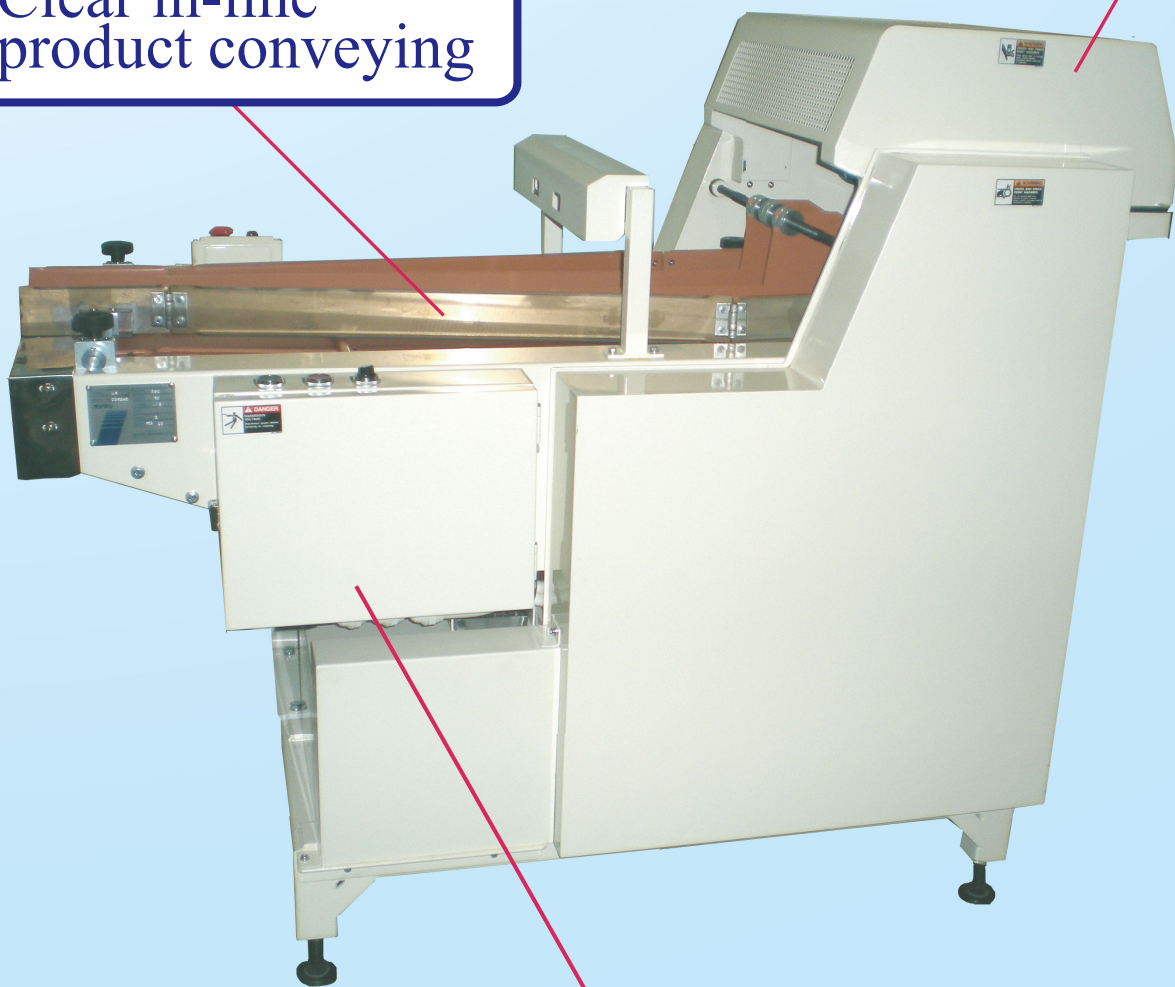
Model LS

Loaf Separator

Simple exterior view and mechanism.
Simple operation.
Easy separating change.

Clear in-line
product conveying

Clear separating section

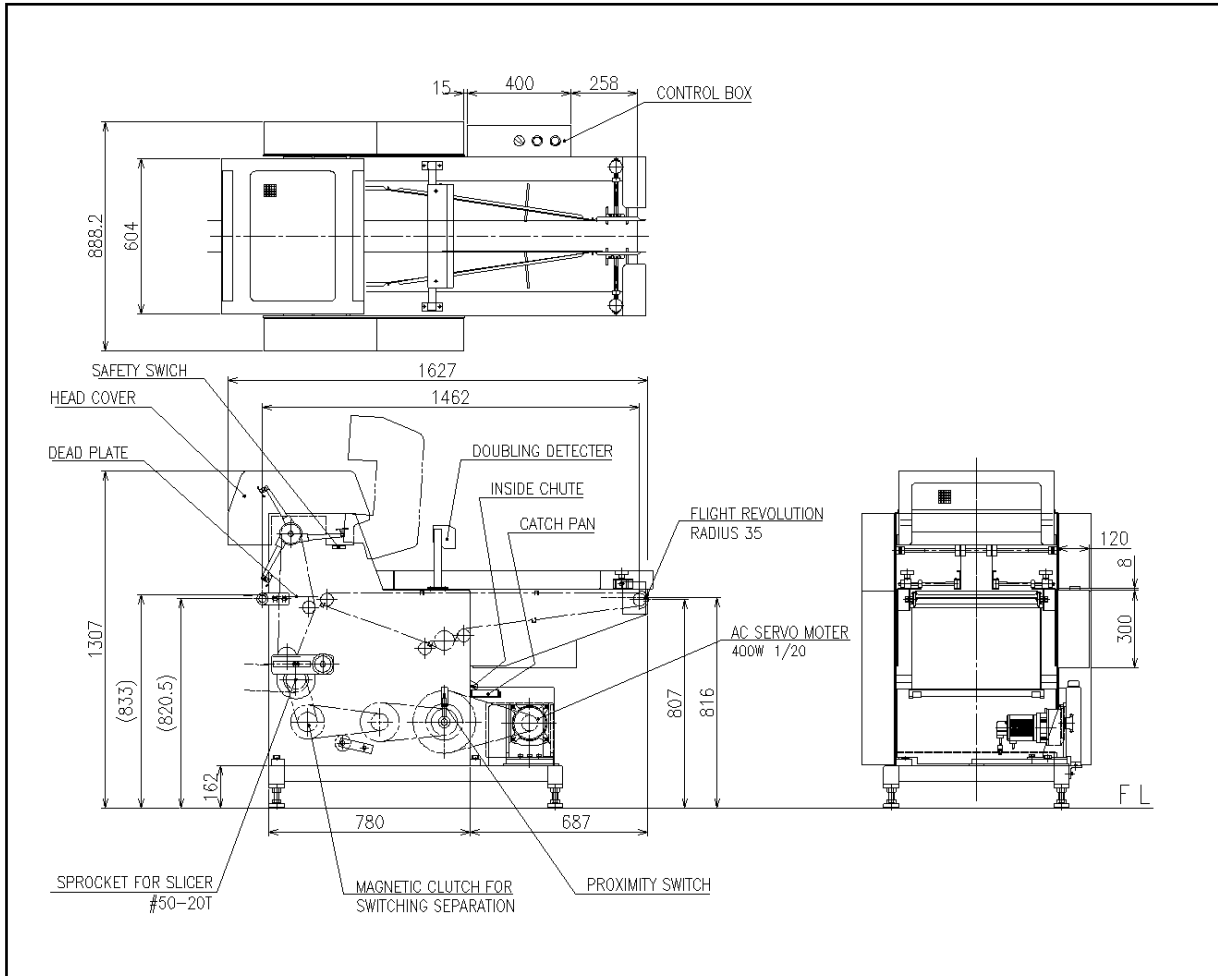


Simple operation panel

 **OSHIKIRI**

Loaf Separator

Model LS



◆ Specifications

Capacity	Separate in 2: Max. 50 pcs/min ----- Separate in 3: Max. 60 pcs/min
Product Size	1lb-Loaf: Width 115-120, Height 100-180, Length 90-140mm ----- 1.5lbs-Loaf: Width 170-178, Height , Length same as 1lb-loaf
Power Source	AC200V 3Phases
Motors	Main motor 0.4kW(1/20) servo ----- Electromagnetic clutch (50W × 2)
Machine weight	approx. 310kg
Optional	Separation in 4 ----- Base up

Note) Specifications and dimensions may be subject to change without prior notice.

Note) Supply voltage is in accordance with the one in the country machine is used.

Transformer might be needed according to the specifications.

OSHIKIRI MACHINERY LTD. <https://www.oshikiri.com/>

4, Kirihara-cho, Fujisawa-shi, Kanagawa, 252-0811 Japan
Phone: 0466-44-6184 Fax: 0466-44-6187 E-mail: intl@oshikiri.com

Oshikiri Corporation of America
10425 Drummond Road, Philadelphia, Pennsylvania 19154-3898
Phone: 215-637-6005 Fax: 215-637-6041 E-mail: oshikiri-production@msn.com



OSHIKIRI Website