

# OSHIKIRI

## Model **DZ** **Divider**



*Mechanical Divider*  
*VFD control*

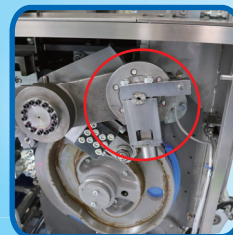
### Highly accurate dividing



- Ensure appropriate dough pressure
- Improve accuracy of dough dividing

Dough pressure compensator

### Easy recovery



- Shear pin replacing is not necessary
- Easy recovery from overload

Overload protector

### Easy cleaning

#### ● Standard specifications

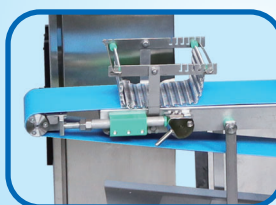
- Resin small ram
- Quick release of conveyor belt

#### ● Options

- Resin main ram \*Negotiable
- Teflon-coated on upper hopper



Small ram (Resin)



Conveyor belt  
Quick release equipment



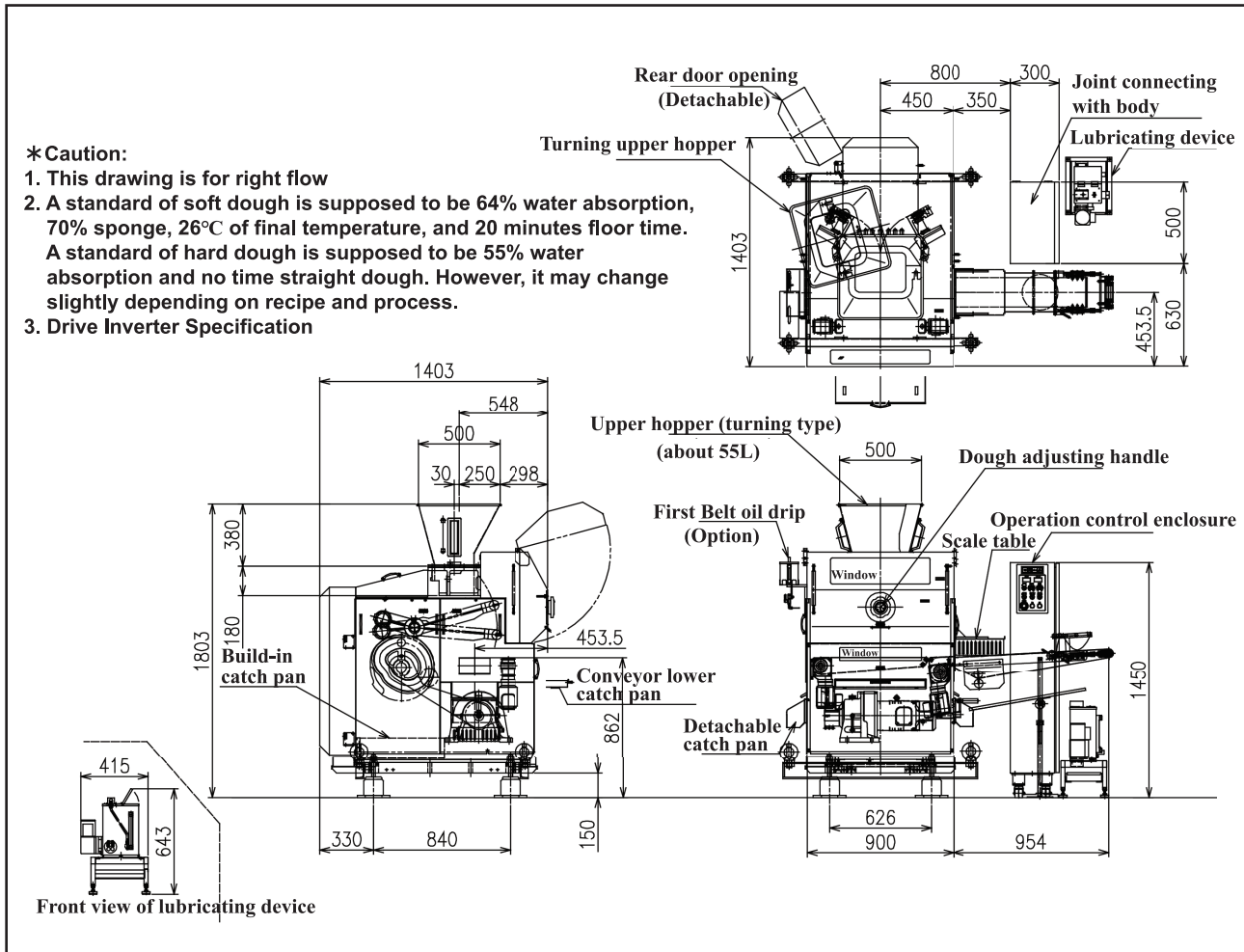
Main ram (Resin)



Upper hopper  
(Teflon coated)

# Divider

# Model DZ



## Specifications

Model	DZ 2	DZ 3	DZ 4	DZ 5	DZ 6	DZ 2/4 cassette (Optional)		DZ 3/6 cassette (Optional)	
No. of pockets	2	3	4	5	6	2	4	3	6
Dough weight g (soft dough)	100 - 600	70 - 400	35 - 270	30 - 210	25 - 150	100 - 600	35 - 270	70 - 400	25 - 150
Capacity (pcs/h)	960 - 2400	1440 - 3600	1920 - 4800	2400 - 6000	2880 - 7200	960 - 2400	1920 - 4800	1440 - 3600	2880 - 7200
No. of strokes	8 - 20 st/min (optional 8 - 25 st/min)								
Motor	Main drive 2.2 kW 4P ( VFD control ), Lubricating device 40 W 1st Conveyor 0.2 kW 4P ( VFD control ), 2nd Conveyor 0.2 kW 4P ( VFD control )								
Dimensions	D 1403 mm × W 912 mm × H 1803 mm								
Machine weight	Approx. 1800 kg (including a conveyor and a control enclosure)								

Note) Specifications and dimensions are subject to change without prior notice.

Note) Transformer might be needed depending upon the specifications.

## OSHIKIRI MACHINERY LTD.

<https://www.oshikiri.com/>

4, Kirihara-cho, Fujisawa-shi, Kanagawa, 252-0811 Japan  
Phone: 0466-44-6184 Fax: 0466-44-6187 E-mail: intl@oshikiri.com

Oshikiri Corporation of America  
10425 Drummond Road, Philadelphia, Pennsylvania 19154-3898  
Phone: 215-637-6005 Fax: 215-637-6041 E-mail: oshikiri-production@msn.com



OSHIKIRI Website