

BREAD BAGGER

Simple Construction !

Easy Maintenance !

Easy Sanitation !

Easy Visual Inspection !

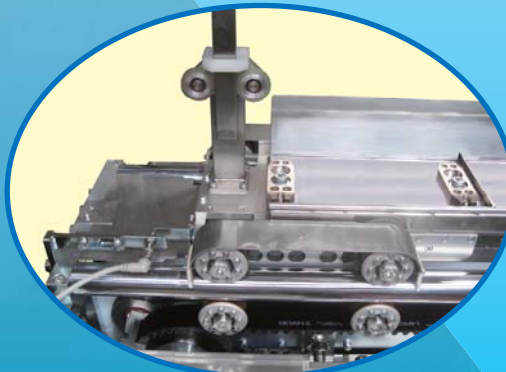


Model : BB21

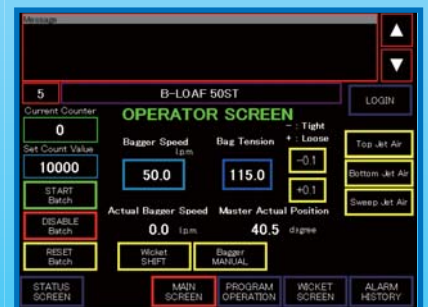
Feature 1
Scoop Tension Adjusted
by Servo Motor

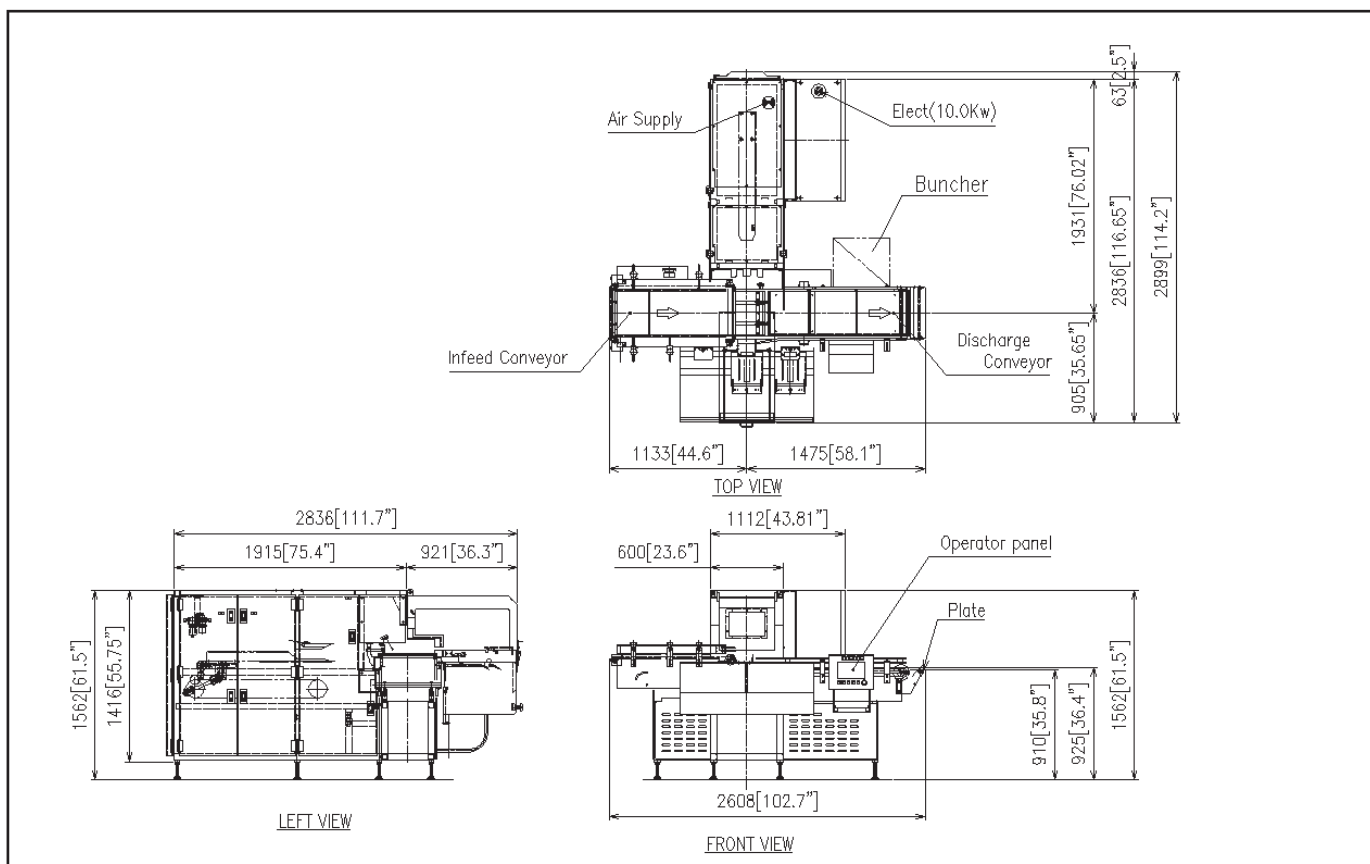


Feature 2
Optimal Scoop Design
for Minimal Wear



Feature 3
Operator
Interface





Specifications

Bread Bagger <BB21>	
Power Source	AC460v 60Hz 3Phase
Main Power	10Kw (Servo Motor)
Loaf Size Range	Length : 8"(203mm)-16"(406mm)
	Width : 3-5/8"(98mm)-5-1/2"(140mm)
	Height : 3"(76mm)-6"(152mm)
Air Required	25SCFM at 75PSIG
Shipping Weight	Approx 2700lb (1210kg)
Dimensions	Approx 2813mm × 3592mm × 1550mm

Conversion Value : 25SCFM = 700NL/min 75PSIG = 0.35Mpa (5.3bar)

Note) Specifications and dimensions may be subject to change without prior notice.

Note) Supply voltage is in accordance with the one in the country machine is used.

Transformer might be needed according to the specifications.

OSHIKIRI MACHINERY LTD.

<https://www.oshikiri.com/>

4, Kirihara-cho, Fujisawa-shi, Kanagawa, 252-0811 Japan

Phone: 0466-44-6184 Fax: 0466-44-6187 E-mail: intl@oshikiri.com

Oshikiri Corporation of America

10425 Drummond Road, Philadelphia, Pennsylvania 19154-3898

Phone: 215-637-6005 Fax: 215-637-6041 E-mail: oshikiri-production@msn.com

19.07.08 OSHIKIRI P-184-7