

support the product stability and objective data construction in dough



Development monitor MULTI

new function of development monitor MULTI

Development monitor is now renewal completely

An on-board automatic data save function

- The comparison data selection is specified automatically by selecting saving file of each product. Selection method is very simple with selecting switch of products. The save of mixing data can be also made automatically without operating the PC by operator
- File name is made automatically

Example for product selecting switch

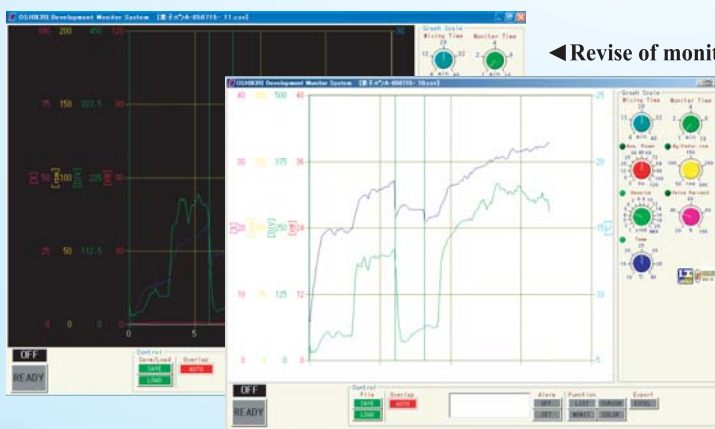


Outer monitoring function

- The place of data saving folder can be set by users option. Specified each product Folder can be saved in outer PC by LAN
- As PC is combined with LAN and remote operating software, centralized monitoring Can be possible with outer PC (remote operating software is optional)

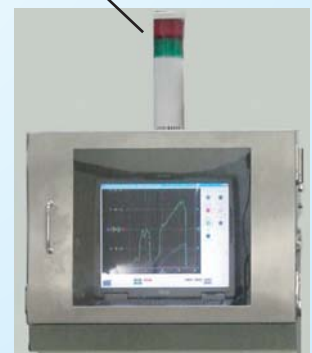
An on-board automatic comparison alarm function

- Past mixing data during mixing can be overlapped and mixing status at actual time can be compared.
- Record the change of dough status during mixing.
- By using automatic real time comparison mode, fault alarm during mixing is found and Inform to operator. Alarm can be informed by alarm light and buzzer can be Recorded.
- Tolerance range at comparison mode can be set with visual.



◀ Revise of monitor color can be set freely

Alarm light and Buzzer



▲ Development Monitor MULTI Standard

Other function

- As mixing data in the past is overlapped, appropriate mixing can be considered at real time
- Objective data by the changes of dough temperature and dough condition (develop graphData) can be controlled and saved
 - Therefore,
 - Adjustment of mixing based on material change by the season
 - the time to take over by New operator can be shorten
 - Alarm of mixing fault by forgetting to dump the material
 - Consider new recipe mixing
- Development graph, dough temperature, motor power can be shown and recorded as standard
- The data can be recorded by CSV (analysis consideration with excel can be possible)
- Stop record during mixing is drawn in the graph.

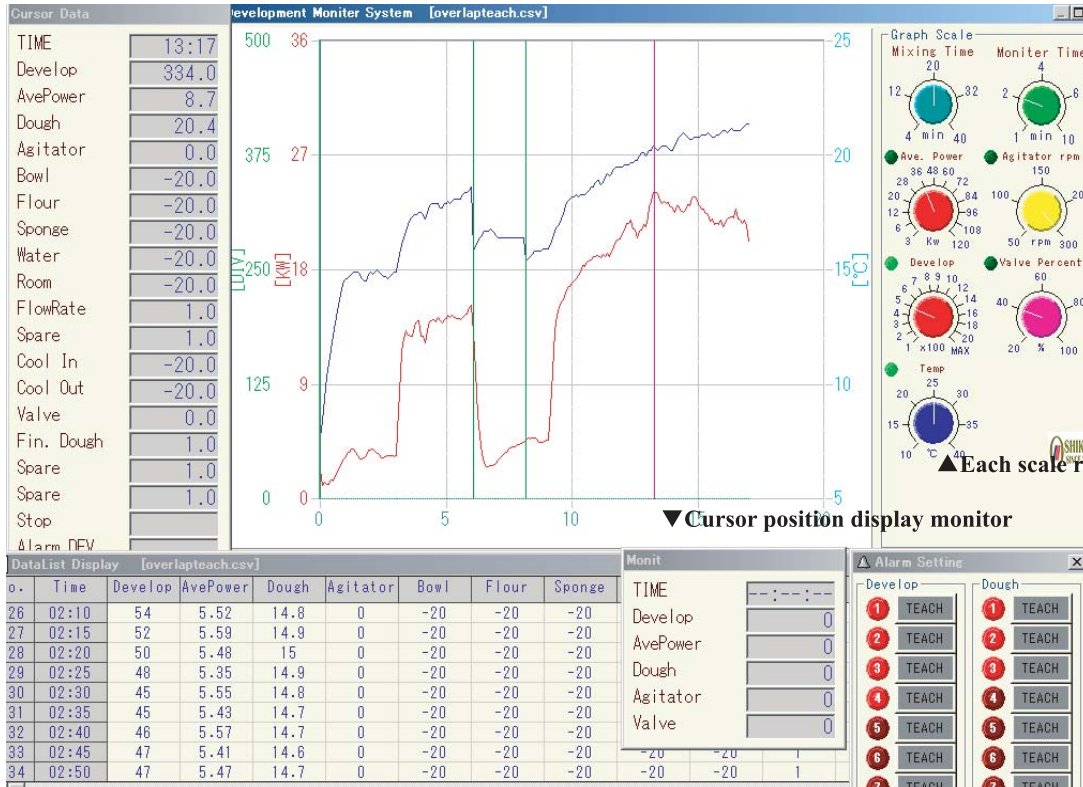


Development monitor

MULTI

● Monitor display sample for Development Monitor MULTI (multi-windows are shown for explanation)

▼Window for cursor point digital numeral display



▲Each scale range change panel

▼Cursor position display monitor

▲Window for digital data and alarm LOG record content check

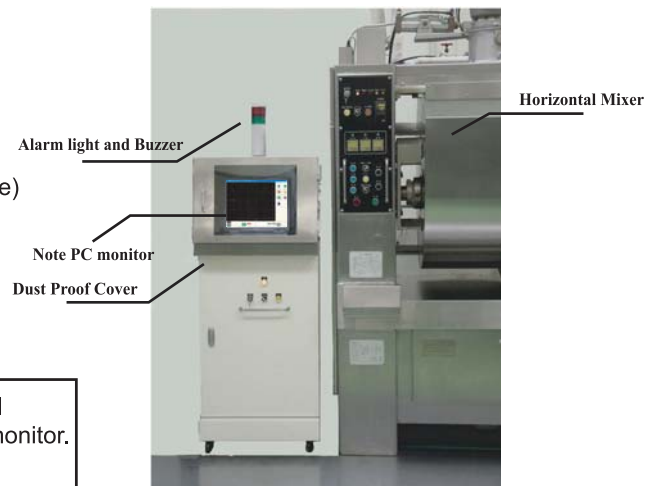
▲Window for alarm setting
(10 area individual setting can be possible)

● Specifications of Development Monitor MULTI

- ◆Dust proof cover
- ◆unit weight 80kg
- ◆unit size W 600 × D 500 × H 1500 mm
- ◆Standard to be displayed
 - Dough Temperature
 - Develop Graph
 - Mixer motor power graph
 (Other sensor output as optional can be possible)
- ◆PC to be used Note PC (required serial port)
- ◆OS to be used WINDOWS 10

*WINDOWS IS A REGISTERED TRADEMARK OF MICROSOFT

▼Installation sample of Development Monitor MULTI



● Development Monitor Control Aggregate Tool

Tool is provided as optional which can aggregate, make a list and control LOG of mixing data and presence of alarm abstracted by development monitor. This is required tool for production manager with using LAN.

OSHIKIRI MACHINERY LTD.

<http://www.oshikiri.com/>

4, Kirihara-cho, Fujisawa-shi, Kanagawa, 252-0811 Japan
Phone: 0466-44-6184 Fax: 0466-44-6187 E-mail: intl@oshikiri.com

Oshikiri Corporation of America
10425 Drummond Road, Philadelphia, Pennsylvania 19154-3898
Phone: 215-637-6005 Fax: 215-637-6041 E-mail: oshikiri-production@msn.com